

# An update on Tycoon at CERN

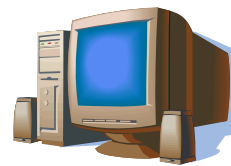
J.M. Dana  
[Jose.Dana@cern.ch](mailto:Jose.Dana@cern.ch)



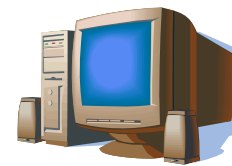
# Tycoon evolution in April/May/June

- Visit to HP Labs (Palo Alto, April 19<sup>th</sup>)
  - Meeting with Kevin Lai (Tycoon's main developer) and Bernardo Huberman (Director of the Information Dynamics Lab)
- Formal presentation of Tycoon at 2<sup>nd</sup> EGEE User Forum (Manchester, May 9<sup>th</sup>-11<sup>th</sup>)
  - Meeting with Per Öster (BalticGrid project director)
- HP/openlab/EGEE/ meeting (CERN, June 11<sup>th</sup>)
  - Meeting with Bernardo Huberman, Bob Jones, etc.

- We have the minimum configuration:
  - Workload Management Service (WMS)
  - Berkeley Database Information Index (BDII)
  - User Interface (UI)
- Moreover Tycoon will deploy virtual machines with:
  - Computing Elements (CE)
  - Worker Nodes (WN)

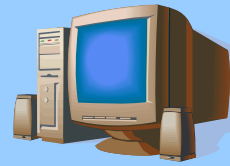


WMS + UI

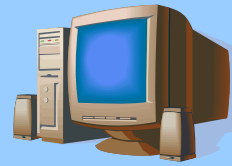


BDII

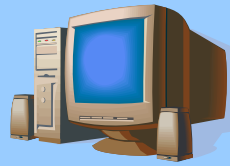
Tycoon



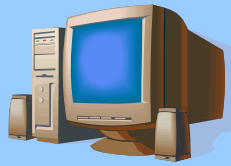
CE



WN



WN



WN

- Synchronizing efforts across HP Labs, BalticGrid, EGEE and CERN openlab
  - Developing the integration together with BalticGrid
  - Feedback and support to/from HP Labs/EGEE
- Scalability tests
  - People at EGEE User Forum were worried about it
  - We're working on it right now

- Working on some requirements:
  - Network configuration (ports, proxies, etc.)
    - Done but too risky. Thinking about possible solutions
  - Tycoon weak security (atomic operations, bank transactions, etc.)
    - Reporting every new bug or requirement we find. HP Labs team should be working on it
  - EGEE certification issues (Xen, Fedora Core 4)
    - HP Labs team should be working on it
  - User/Organization support from HP Labs
    - HP Labs can do that task if necessary

- Planning the joint test between BalticGrid and EGEE platforms
  - Compatibility issues
  - Machines setup
  - Hosts and users security certificates
  - ...
  - We're beginning the discussion with BalticGrid developers

- Tycoon web interface
  - <http://tycoon.hpl.hp.com/>
  - <http://204.123.46.50>
- CERN/Grid roadmap (list of our requirements, critical bugs, etc).
  - <http://tycoon-dev.hpl.hp.com/query?status=new&status=assigned&status=reopened&milestone=0.5.4+CERN%2FGrid>





# Q & A